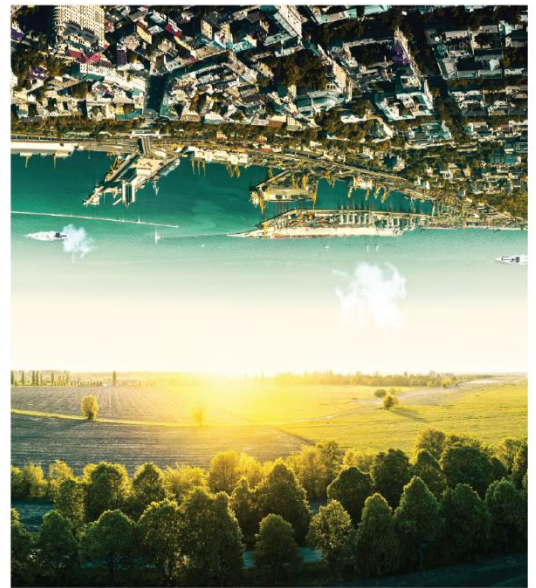


MONTHLY NEWSLETTER

# SUSTAINABILITY TRENDS

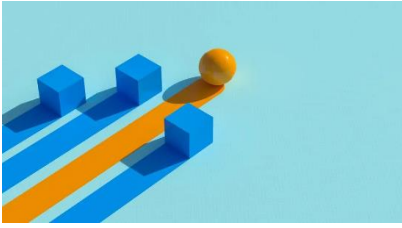
FEBRUARY 2025 EDITION



## SUSTAINABILITY HIGHLIGHTS

PAGE	TOPIC
4	From Mimicry To Strategy: The Real Sustainability Challenge Of 2025
4	What Corporate Sustainability Is Missing And How To Fill The Gap
4	South Africa Advances Environmental Sustainability Initiatives
4	CNRG calls for redefinition of sustainable mining
4	Zimbabwe's coffee industry eyes massive growth
5	About INSAF
6	Contact details

## From Mimicry To Strategy: The Real Sustainability Challenge Of 2025



“Change is the only constant.” As 2025 unveils dramatic shifts in technology, the global economy, and geopolitics, this is the refrain of leaders worldwide. Business leaders in particular are noting a striking change in mood around sustainability. On this point, much has been made this year of corporate sustainability “rollbacks”, relaxing sustainability reporting regulations, and “climate backtracking”. **Read more:**

<https://www.forbes.com/sites/maryjohnstone-louis/2025/02/27/from-mimicry-to-strategy-the-real-sustainability-challenge-of-2025/>

## What Corporate Sustainability Is Missing And How To Fill The Gap



In a welcome development for the planet, the sustainability movement has surged and shifted the corporate landscape. In 2023, 72% of S&P 500 companies integrated sustainability metrics into executive compensation, signaling a growing awareness of the need to consider environmental impacts alongside financial performance. **Readmore:**

<https://www.forbes.com/sites/arleneblum/2025/02/27/what-corporate-sustainability-is-missing/>

## South Africa Advances Environmental Sustainability Initiatives

South Africa is grappling with significant environmental challenges exacerbated by invasive plant species and the need for sustainable public procurement practices. Across the country, efforts are underway to address these pressing issues, with the aim of enhancing biodiversity, water security, and overall environmental stewardship. Over the centuries, invasive plants and trees such as port jackson, black wattle, and gum trees have been introduced to South Africa. **Read more:** <https://evrimagaci.org/tpg/south-africa-advances-environmental-sustainability-initiatives-224776>

## CNRG calls for redefinition of sustainable mining



The Centre for Natural Resource Governance (CNRG) programmes manager Tracy Mutowekuziva has called for a redefinition of sustainable mining for the country to derive more benefits from its mineral resources. There has been a push away from the extractive model of local mining to value addition to maximise Zimbabwe’s vast natural resources as it is the country’s main foreign currency earner.

**Read more:** <https://www.newsday.co.zw/business/article/200038754/cnrg-calls-for-redefinition-of-sustainable-mining>

## Zimbabwe’s coffee industry eyes massive growth



HARARE, Feb 20 (NewsDay Live) - Zimbabwe’s coffee sector is gearing up for a major resurgence with the launch of the Zimbabwe Barista Throwdown (ZBT) 2025, a nationwide competition designed to spotlight local barista talent and catapult the local coffee to the global stage. Organized by Changamiri Coffee Company in collaboration with United Arab Emirates-based Artisan Empire and the Living Coffee

Foundation, the competition will run for six months, culminating in the inaugural Zimbabwe Coffee Festival on September 4-5, 2025, at the Changamiri Coffee Resort in Vumba. **Read more:**

<https://www.thezimbabwean.co/2025/02/zimbabwes-coffee-industry-eyes-massive-growth/>

## ABOUT INSAF

INSAF is an independent multi-disciplinary independent sustainability think tank organisation working towards a sustainable Africa. The Institute is a registered Independent Trust (MA1218/2012) in Zimbabwe.

## OUR VISION

Advance Sustainability Initiatives for Africa

## OUR MISSION

Help our stakeholders to achieve their sustainability goals because we make it our purpose

## OUR VALUES

- ✧ **Thought Leadership** – We harness our research capabilities, innovation, and purpose to make sustainability happen.
- ✧ **Professionalism** – We are driven by honesty, integrity, and ethical standards in our practices.
  - ✧ **Excellence** – We are resolute to deliver with passion, expertise, and competences in all delivery.
- ✧ **Impacts** – We inspire sustainable transformation and change with bold actions.



**SCAN ME**

## **CONTACT DETAILS**

---

Institute for Sustainability Africa (INSAF)

**Address:** 65 Whitwell, Borrowdale West, Harare, Zimbabwe

**Telephone:** +263 242 796 501/ 0778 357 714

**Website:** [www.instforsustainafrica.org](http://www.instforsustainafrica.org)

**Email:** [admin@insafrika.org.zw](mailto:admin@insafrika.org.zw)

---